

Shurijo Castle Park Exhibition

Treasures of the Kings

place Special exhibit room of the Kugani-udun

Dates

2018
4/20(Fri)
2018
7/3(Tue)



特化胸進通及拍
願解紛談父誠賦
止命令孤輝論政
扶弱植丹階盡忠
績呈歡定位多才
工資紛男業務積
毛皆忠帝則五官
體孰康家無轉故
寄龍惟時結東喝
誠與法去糖取精
飲種比珠除飯徒
神明煩製即扇每
素想願背身詠場
騰霄次亦荷蔚蓋
所謂伊人萬曆十
三月觀於長安華
道光十五年乙未
尚書 尚書 尚書

Shurijo Castle Park Exhibition

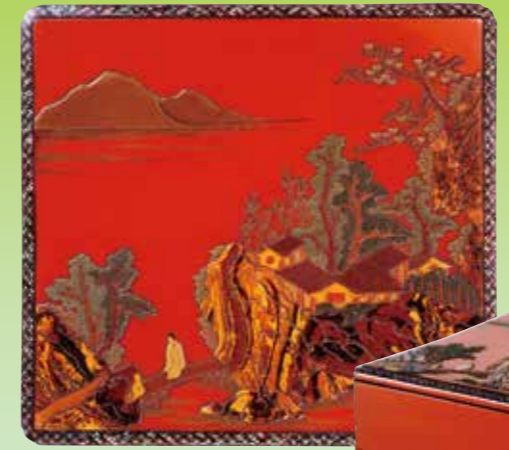
Ryukyuan People's Picnic

Jubako / Sageju / Taku

place Special exhibit room on the 2nd floor the Nanden

Dates

2018
4/13(Fri)
2018
7/3(Tue)





The season of the Shīmī (tomb sweeping festival) is here. You will witness many families cleaning the tomb and having a picnic in front of it, where the ancestors rest around this time of the year. Ushīmī(Shuri dialect) is a tradition that continues from the Ryukyu Kingdom era, and it is held from late February through late March of the lunar calendar. Several events such as Hamauri (ritual to pray for health) on March 3rd (lunar calendar), and Hārī(dragon boat race) on May 4th (lunar calendar) are held as tradition. Food was an important element alongside with prayer. Ryukyuan people enjoyed the feast outdoors using several tools.

We will exhibit the lacquerwares for picnic during the Ryukyu Kingdom era such as multi-tiered food box, picnic box, and thermos bottle. They were used by kings and royalties and are decorated with gorgeous gold-inlays, multi-layered lacquer coating, gold-leaf, and mother-of-pearl. These lacquerwares were created between 18th through 19th century, and are owned by Churashima Foundation, the manager of the Shurijo Castle Park. Please enjoy the excellent work of art and imagine how the Ryukyuan people held picnics during the kingdom times.

