

# Plants you can see



**Flowering season: Nov.-Jun.**  
Place: ② Herb Garden Zone



**Flowering season: May-Dec.**  
Place: ③ Forage Garden for Butterflies



**Flowering season: Jul.-Sep.**  
Place: Near ③ Forage Garden for Butterflies



**Flowering season: Jul.**  
Place: ④ Street Tree Zone



**Flowering season: Jul.-Aug.**  
Place: ⑤ Salt/wind Tolerant Tree Zone



**Flowering season: May-Jun., Oct.-Dec.**  
Place: ⑤ Salt/wind Tolerant Tree Zone



**Flowering season: Mar.-May.**  
Place: ⑥ Salt/wind Tolerant Palm Tree Zone



**Flowering season: Jan.-Mar.**  
Place: ⑦ Ground Cover Plant Zone



**Flowering season: Dec.-Feb.**  
Place: ⑧ Salt/wind Tolerant Bush Zone



**Flowering season: Jun.-Oct.**  
Place: ⑧ Salt/wind Tolerant Bush Zone  
⑩ Hedge and Vine Zone



**Flowering season: Oct.-Dec.**  
Place: ⑬ Row of Indian Almond Trees



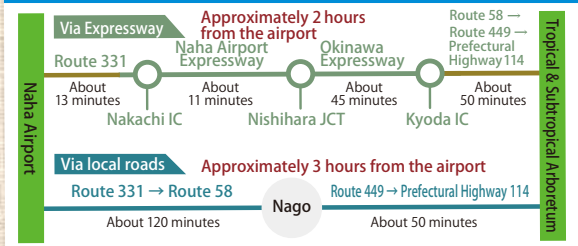
**Flowering season: Dec.-Mar.**  
Place: ⑭ Acid-loving Plant Zone

# Access to the Tropical & Subtropical Arboretum

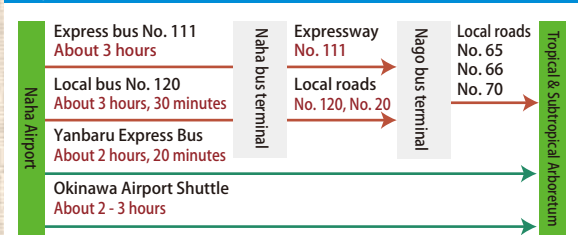
海洋博公園 OCEAN EXPO PARK



## By car (P is convenient for parking)



## By bus



\* Please contact for more details.  
Okinawa Bus Association Tel: 098-867-7386  
Yanbaru Express Bus Tel: 098-056-5760  
Okinawa Airport Shuttle Tel: 098-996-3539

## 【Green advisory office】



Scanning this QR code will give you access to detailed information about events held at the Tropical and Subtropical Arboretum.



**Admission: Free**

海洋博公園管理センター  
Ocean Expo Park Management Center

905-0206 / 424 Ishikawa, Motobu Town,  
Kunigami, Okinawa Prefecture  
TEL 0980-48-3782

<http://oki-park.jp/> / Ocean Expo Park

# Tropical & Subtropical Arboretum



# Let's play at an arboretum!

## Activities for enjoying Okinawan plants

### Handcrafts with plants

You can make various kinds of handcraft with plants. The item to be made varies each month.



Plants Dyeing



Christmas wreath



pressed flower calendar



wind chime



Botanical candle



easter egg

## Ground golf

Enjoy ground golf with family and friends on a course surrounded by greenery and flowers! A challenging course is also available. Please check in at the information desk.



## Stamp Rally

Enjoy the Stamp Rally! If you collect all stamps, you will receive a present.



## Play with water

Play with water at a mushroom-shaped fountain. Water comes out when you push the top of the mushroom. Be ready to get wet and bring a change of clothing.



# Welcome to the Green Kingdom!

The Tropical & Subtropical Arboretum, filled with various kinds of greenery and flowers, provides you with an easy way to learn about plants and have fun doing it. Along with areas and zones with different kinds of tropical and subtropical plants, many activities such as making handcrafts with plants, a guided tour and ground golf are available for you, your family and your friends to enjoy.

## Suggested courses

Quick 30-minute course ① ▶ ② ▶ ③ ▶ ⑫ ▶ ⑬ ▶ ⑭

Enjoy the scent of fresh herbs and the sight of butterflies fluttering around the garden. The chances of seeing them are higher in the morning.

Leisurely 60-minute course ① ▶ ② ▶ ③ ▶ ④ ▶ ⑤ ▶ ⑥ ▶ ⑦ ▶ ⑧ ▶ ⑨ ▶ ⑩ ▶ ⑪ ▶ ⑫ ▶ ⑬ ▶ ⑭

A stroll in the fresh air among green-leaved trees. You will feel much better afterwards, healed and refreshed. Don't miss a great view from the Sea Observatory!

Family course

① ▶ **Make handcrafts at the handcraft center, situated in the rest area.** ▶ ③ ▶ ⑭

Play in the water on hot summer days! Don't forget to bring a change of clothes.



### Arboretum map

Feeling great!  
It's so green!



Gajumaru kun  
(Banyan boy)

#### Ground Cover Plant Zone



These carpets of green deflect strong sunlight, making for a cooler environment.

#### Salt/wind Tolerant Palm Tree Zone



Introducing palm trees, an integral part of a tropical island.

#### Salt/wind Tolerant Tree Zone



Introducing trees suitable for areas subject to typhoons and salty winds from the ocean.

#### Street Tree Zone



Introducing street trees, useful not only for filtering sunlight but for making streets beautiful with greenery.

#### Forage Garden for Butterflies



On a sunny morning, you may be able to see butterflies flitting from flower to flower.

#### Herb Garden Zone



This garden is a collection of various herbs that can withstand high temperatures and are grown in Okinawa.

#### Salt/wind Tolerant Bush Zone



Tropical and subtropical bushes tolerant of typhoons and salty winds from the ocean.



Gajumaru ojisan  
(Mr. Banyan tree)

#### Tropical Garden



Introduction to plants and designs for flowerbeds in Okinawa

#### Hedge and Vine Zone



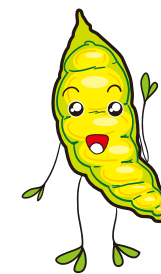
Enjoy the green of hedges and vines with fences and pergolas.

#### 3-D Flowerbed



The symbol of the Tropical & Subtropical Arboretum, the flowerbed has a diameter of approximately three meters and is replanted several times a year.

#### Row of Indian Almond Trees



Modama chan  
(Modama bean girl)

Let's make handcrafts!



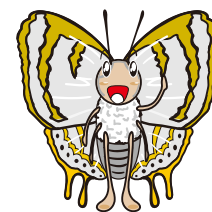
Deigo chan  
(Deigo girl)

Prefectural Highway 114

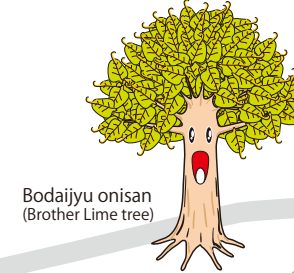
#### Big Banyan Tree



Pannoki chan  
(Bread fruit girl)



Futaicho kun  
(Butterfly boy)



Bodaiju onisan  
(Brother Lime tree)



South Gate

Rest area & handcraft center

Entrance, information booth

#### Acid-loving Plant Zone



Observe camellias and other acid soil plants from Okinawa.

Restrooms  
(Toilets for handicapped are also available.)

Parking

Electric trolley  
Trolley stop